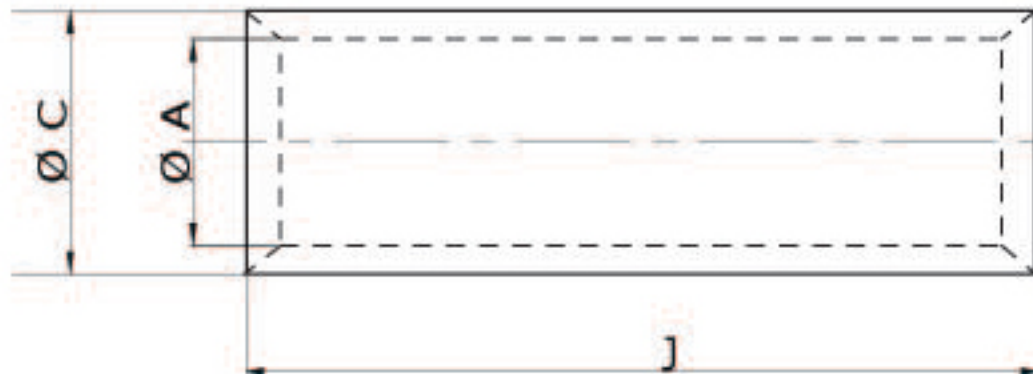


Aluminium Connectors (Ferrules)

For Crimping to LT Alum. Conductors - Straight through type

- Electrolytic High Conductivity Aluminium
- Electro Tinned Plated



Cable Size mm ²	Dimensions			IDEAL CAT NO.
	A	C	J	
16	5.4	8.3	26	IDPF - 16
25	7.0	10.0	35	IDPF - 25
35	8.0	10.8	40	IDPF - 35
50	9.3	13.0	45	IDPF - 50
70	11.6	16.0	55	IDPF - 70
95	12.9	17.1	60	IDPF - 95
120	14.8	19.6	65	IDPF - 120
150	16.1	21.2	70	IDPF - 150
185	18.0	23.7	75	IDPF - 185
225	20.6	27.0	85	IDPF - 225
240	22.0	28.0	90	IDPF - 240
300	24.0	31.0	100	IDPF - 300
400	28.0	36.0	115	IDPF - 400
500	30.0	41.0	125	IDPF - 500
630	35.0	46.0	140	IDPF - 630
800	39.0	51.0	160	IDPF - 800
1000	43.5	57.0	210	IDPF - 1000